

## **BioGeography-101: Mapping Prairie Passage Flyways**

### ***Understanding People, Places & Changes over time ...***



During a Fall-2003 USGS Geomorphology Workshop hosted by the Wisconsin Stewardship Network (WSN) at the Northern Great Lakes Visitors Center (Ashland, WI), I was inspired to use **High-TEK** Failure-Mode an Effects Analysis (FMEA) protocols to help focus on USEPA Non-Point Pollution Sources via HamlineU-CGEE's **Waters to the Sea**. I merged this effort with our WFS Minnesota Futurists Chapter's Eco-Futures Forum memetics research initiatives.

As a Western Wisconsin/Minnesota FBI InfraGard Alliance Chapter member, I was equally concerned with Bio(t)**ERROR**ism ... Prior Business Continuity Planning/Risk Assessment experience since 1969 led me to observe that cumulative impacts of our own errors and omissions (**E&O**) often exceeded any "worst-case scenario" developed for contingency planning purposes. We adopted that explicit assumption during ASHTO-FHWA safe route pre-planning for transporting low-level nuclear wastes from the Upper Midwest and Washington State to USDOE Sandia Labs at Albuquerque, NM.

Our USEPA Community Right to Know Act (**CRTK**) compliance strategy involved identifying avoidable "single failure points" like Interstate Highway bridges crossing inland waterways near major metropolitan areas. Our virtual team tactics advocated funding **multi-agency** mass casualty incident simulation exercises. Our Preponse Systems Thinking (**PST**) strategy was to reduce impacts (scope and duration) of unanticipated residual risks.

During Summer-2004, I shared this **Emergency Preparedness BSA** (*Know Your Watershed Impact Zone*) **geoWIZard** model at HOAC-BSA's Camp Naish at Bonner Springs, Kansas. Kansas Environmental Leadership Program (KELP Class 6-2005) expanded essential pre-mapping efforts based upon **GPSurveys** with its "*Ridges of Leavenworth County*" watershed awareness project.

Innovative NE-Kansas **multi-agency** mutual aid efforts adapted these protocols to support subsequent Hurricane Katrina and Greensburg, Kansas F5 Tornado recoveries. Kansas University Continuing Education (KUCE) Osher Lifelong Learning Institute featured *Westport to Wakarusa: Past, Present and Future History (1730-2030)* that repurposed Kansas Collection articles compiled by Barbara Watkins in collaboration with the Kansas State Historical Society (KSHS) during Spring-2007.

During 2007-10, Kansas DOT featured Frontier Military Scenic Byway **GPSurveys** while co-developing our USNPS Freedom's Frontier National Heritage Area (FFNHA) Comprehensive Management Plan (CMP) for approval by the U.S. Department of Interior. It was renamed as a KDWP **Frontier Military Historic Byway** (FNHB) during 2011.

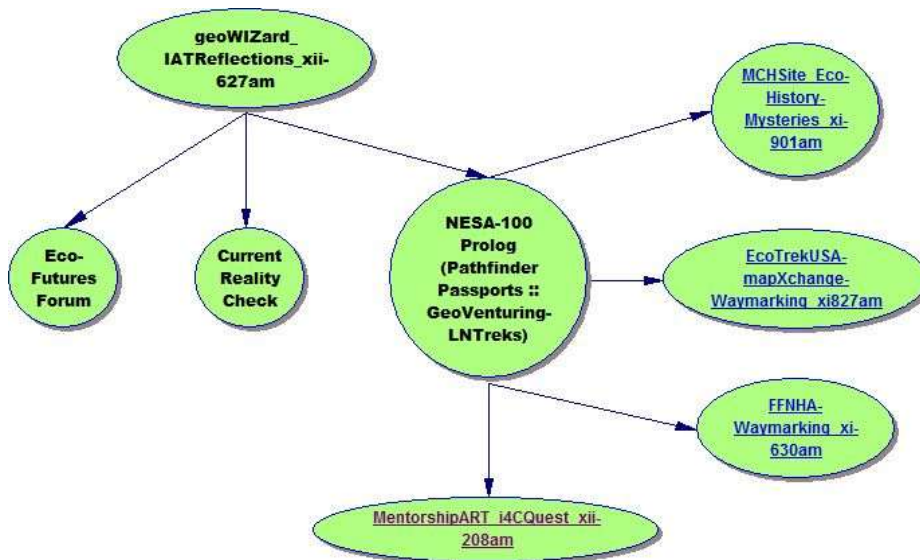
The Boy Scouts of America (BSA) **Geocaching Merit Badge** booklet was issued during the 2010 BSA Centennial. On **4-July-2010**, Veterans of Foreign Wars Post 6654 in De Soto, Kansas dedicated its USS Neosho (**Ne**/water-**osho**/clear) ship's bell display that symbolizes three interdependent themes:

A: Boy Scouts of America Centennial "future thought leadership learning" legacies (1910-2010) ...

B: **Let Freedom Ring** ... USNPS Annual Event Celebrating signing of Declaration of Independence ...

C: **Partners in Patriotism** ... Celebrating Rover Orienteering / Community Stewardship (**RO/CS**) plus FIFTH Freedom Service Learning (natural history adVenturing) projects by local volunteers!

*Rivers are both byways and barriers.  
To understand history, **FIRST** understand rivers.*



[MentorshipART\\_i4CQuest\\_xii-208am](#)

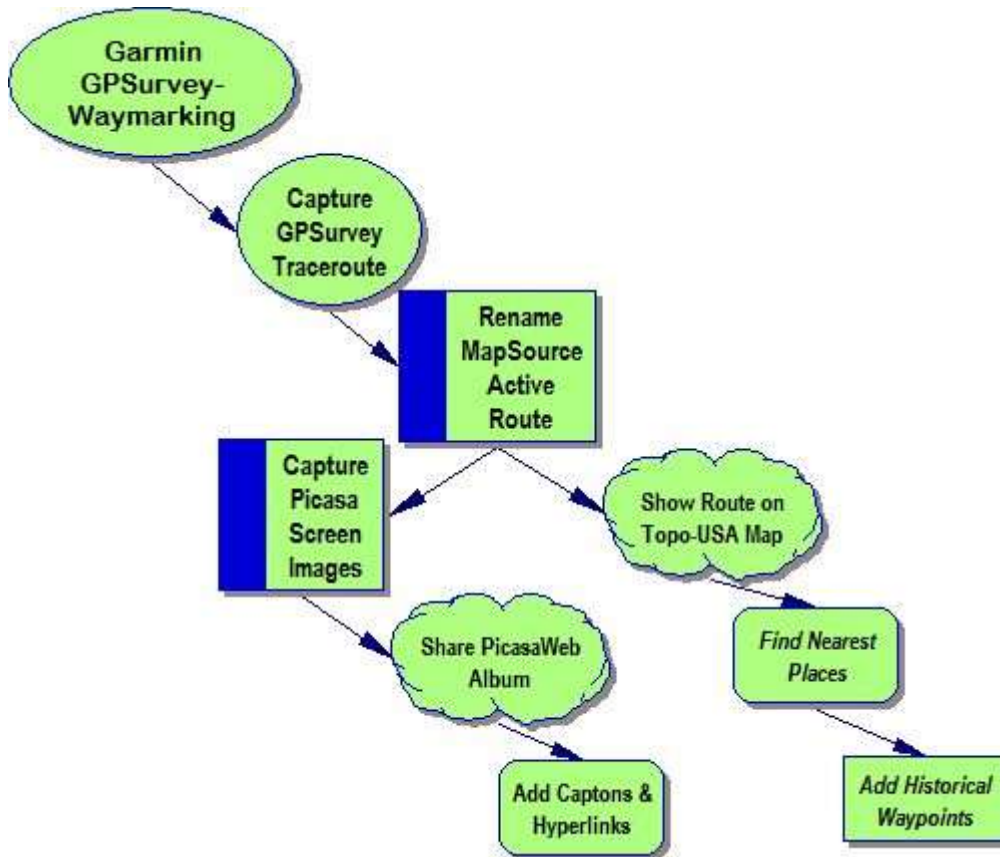
Did John C. Fremont's manifest destiny myths influence indigenous nation ethnocide? (Fremont-Pruess Guidemaps)



*Caring for the Kaw (1997) & Exploring the Kaw Valley by LynnyByczynskii (2002)*

*A guide to the natural and historic treasures of the Kansas River Valley*

LCN: 2002105496 / ISBN: 0-9656695-7-2



### **PREPARED Minds FAVOR Chance:**

Philmont Scout Ranch Expedition **817-F** (Aug-1958)

Explore Post 325 Eagle Scout Court of Honor (1959)

Wiggins Ozark Camp Black River ... River Orienteering (1961)

1965 **Jayhawker Magazine Yearbook** Business Manager

1966 University of Kansas Centennial (BS-Business Admin)

USS Cimarron (AO-22) 1967 **WestPac Cruisebook** (PAO: 1967-68)

1969-71 Fleet Operations Control Center, Pacific (FOCCPAC)

1972 University of Hawaii – Manoa (MS-Info/Decision Science)

**2001** Hawaii International Conference on Systems Science (HICSS-34)

**2002** Minnesota State Colleges & Universities (MnSCU) iTeach VIPanel

**2003** Apostle islands National Lakeshore (APIS) Michigan Island GPSurvey

**2004** HOAC-BSA Theodore Naish Scout Reservation Rim Rock Trail GPSurvey

Kansas Environmental Leadership Program (**KELP Class 6-2005**) **KWO-SWAP**

Geo-LearnNPS: **IEN**-Geo-Education *Healing Our Mother Earth (H-O-M-E)*

**HERS: HIGH-TEK FIFTH Freedom natural history adventuring (FFnha) memes ...**

*THINK Globally and InterACT Regionally but LEARN Locally*

[Gospel of the Red Man](#) by Julia/Ernest Thompson Seton (BSA: 1936)  
I-94WB Wisconsin [Waymarking Silver Mound](#) at Rest Area #54 (MP 121)

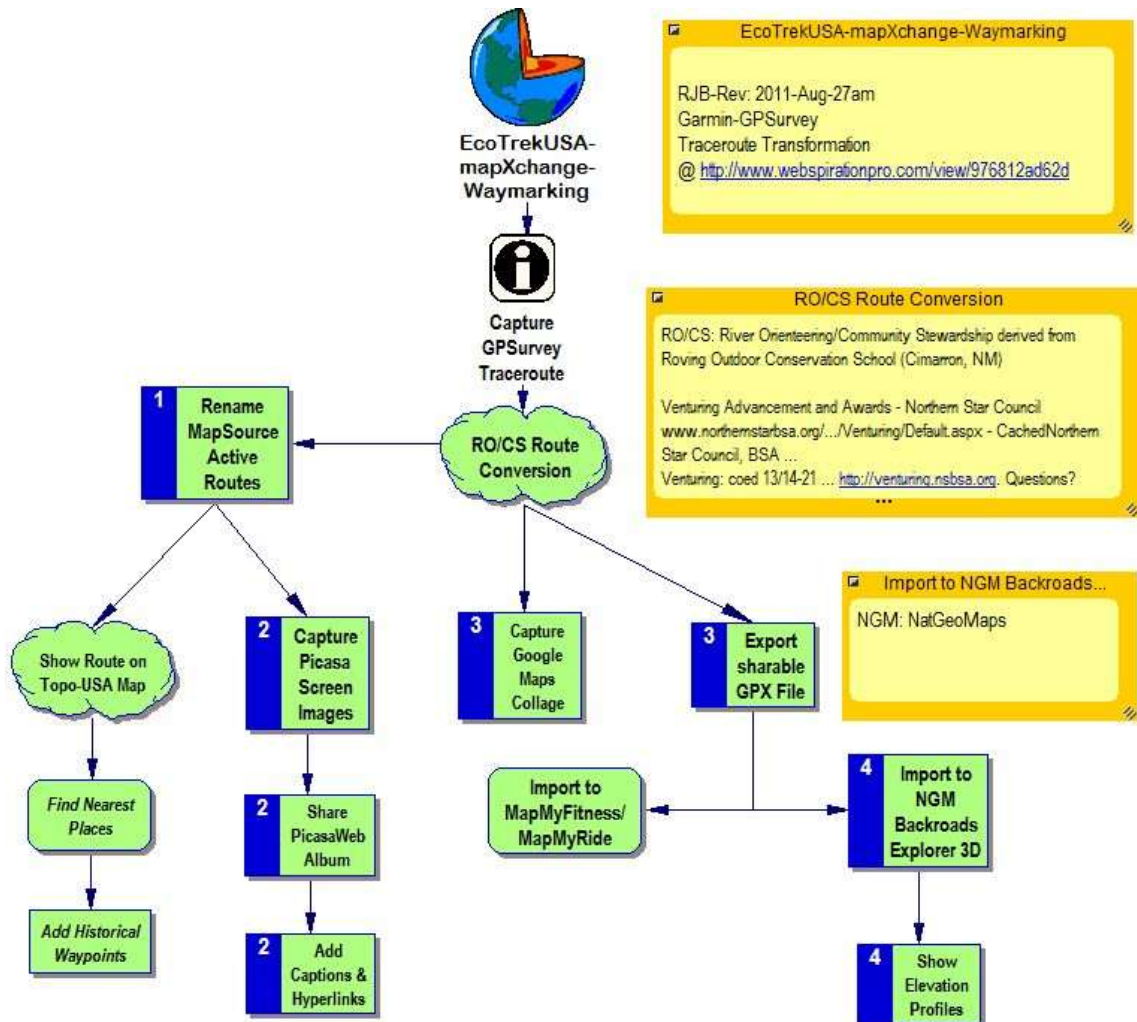
ISBN-13: 978-029922664-0: Along Wisconsin's Ice Age Trail (2008)

Photographed by Bart Smith / Forwarded by Congressman David Obey

<http://www.wisc.edu/wiconsinpress> ... <http://www.iceagetrail.org>

Padding the Black River and its tributaries through Jackson County (WI)

<http://www.friendsoftheblackriver.org>

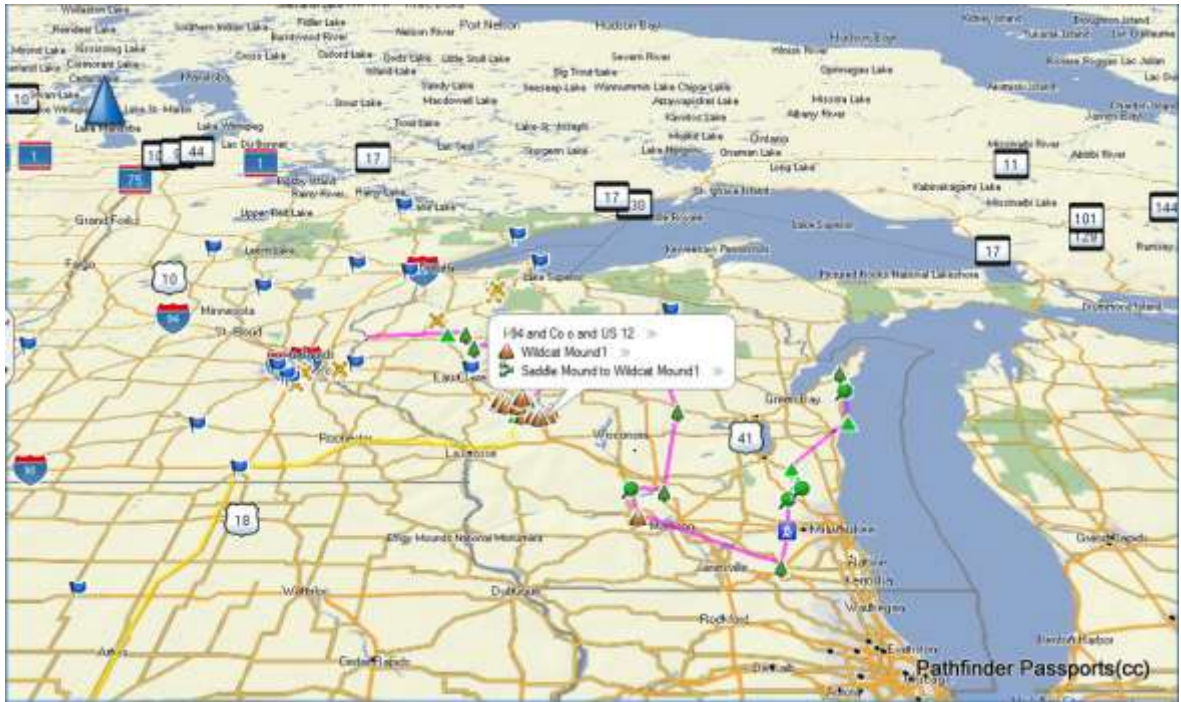


## Current Reality Check

During public land surveys after the Lewis & Clark Expedition, rivers and streams became boundaries. Mapping the Trans-Mississippi West was motivated by extractive economics and building railroads.

University of Wisconsin-Madison eco-historian William Cronon explains that “idealizing distant wilderness too often means not idealizing the environments in which we actually live, the landscapes that for better or worse we call home.” For Zillner, connecting with nature could occur just as easily in “commonplace” landscapes as in wilderness. (p.63: Essay by Sarah Mittlefehldt in [Along Wisconsin's Ice Age Trail](#)).

### **Black River Falls GeoVenturing-LNTreks (Geo-tagged PWA Exports)**



Garmin U.S. Topo 100K via BaseCamp 3D (above) & MapSource (5mi Highest Res.)



## Eco-Futures Forum

### GeoVenturing-LNT

07/02/2012 7:43 AM ...Discussion Draft (v2)

**Subject:** KBS-KVHA “Biogeography Trails” empowering Know Your Watershed Impact Zones

**Objective:** Sustainable Eco-Challenge courses featuring natural history adVenturing stations

**Present:** Emerging Freedom’s Frontier National Heritage Area interpretations seem to stress built environment destinations and manifest destiny myths over preserving and protecting biodiversity or pollinator habitats.

**Proposed:** Planet U Eco-Futures Forum Watershed Orientation Kit (WOK) adapted from pilot program designed, developed, delivered and distributed via Wakarusa Wetland Learners.

**Advantages:**

- [1] Features role of Lewis Lindsay Dyche (Dashing Kansan) in championing highly effective regional conservation practices that were adopted by USFWS & USNPS as national models.
- [2] StoryTech protocols showcase influences of Kansas bioneers on interpreting the 1968 National Trail Systems Act as innovative social responsibility pathfinders.
- [3] Pre-stages 2016 sesquicentennial for University of Kansas.
- [4] Celebrates 2016 centennial of US National Park Service.
- [5] Neutralizes Nature Deficit Disorder (NDD) featured by Richard Louv who authored Last Child in the Woods & who champions “No Child Left Inside” natural history learning options.

**Disadvantages:**

- [A] Helps ensure watershed pollution prevention practices are continuously improved.
- [B] Engages key community-based social capital reinvestors as essential KBS partners.
- [C] Cultivates Kaw Valley Mindscapes in collaboration with Kansas State University.

**Action:** Endorse KU Alumni Association co-funding appeal via KU Endowment Association.

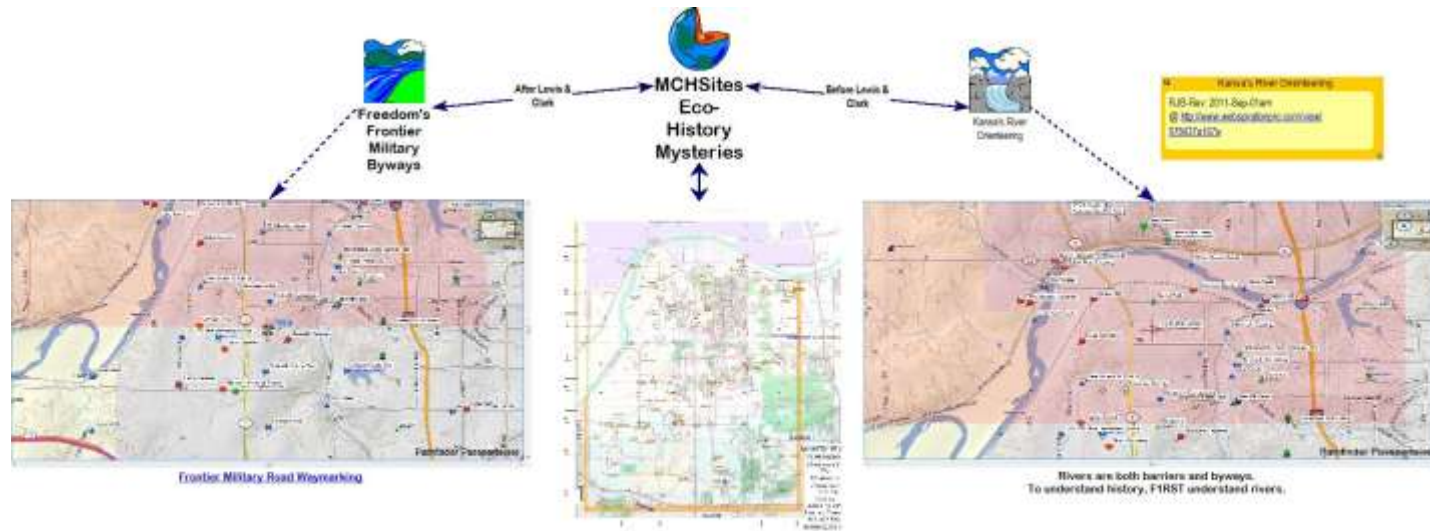
**Consider collaborating with the KU Continuing Education Osher Lifelong Learning Institute.**

geoWIZard IATReflections xii-627a2

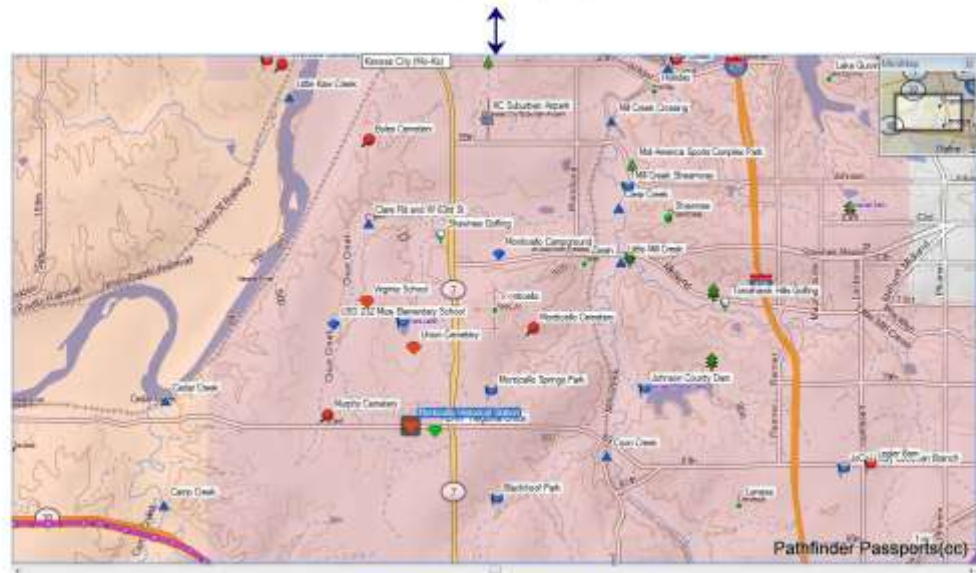


[MCHSite Eco-History-Mysteries xi-901am](#)

Expand to preview BioGeography Table of Contents (BGTOC)



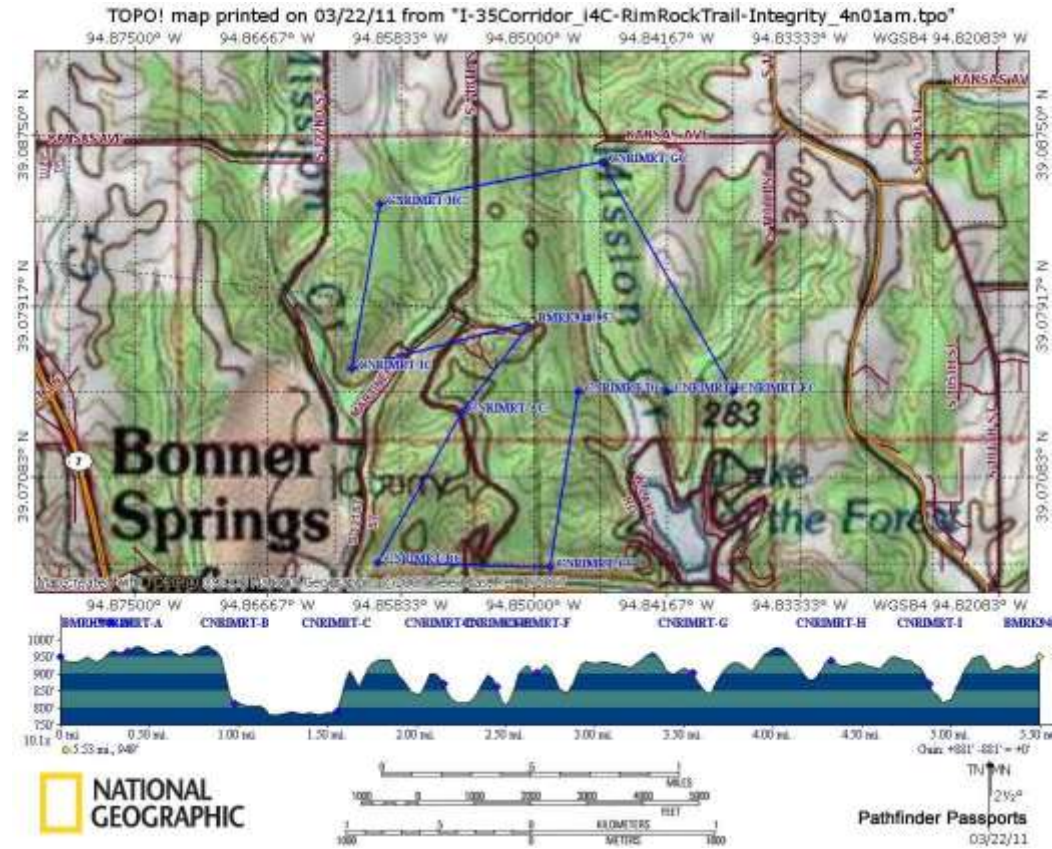
[Monticello Community Historical Sites Locator \(Garmin MapSource\)](#)







L5x1Mgl-35Corridor\_i4C-RimRockTrail-Integrity\_4n01am



[Celebrate Kansas Voices - A learning community empowering ...](http://celebratetexas.com)  
[celebratetexas.com](http://celebratetexas.com)

"Envisioning Prairie Passage **AGR-iTourism** @ <http://ning.it/Lxxt0b>" ...

"**Frontier Military Historic Byway (FMHB)** Guide @ <http://ning.it/KH5G8k>"

[MentorshipART mapXchange\(cc\) / Mormon Battalion](http://minnesotafuturist.pbworks.com/w/page/21441168/Mormon%20Battalion)

[minnesotafuturist.pbworks.com/w/page/21441168/Mormon%20Battalion](http://minnesotafuturist.pbworks.com/w/page/21441168/Mormon%20Battalion)

The Santa Fe Trail was a **historic** 19th century ... Allie "**Frontier Army Museum**" Virtual Tour .  
Live with Lewis ... This Wiki is licensed **CC-BY-NC-SA - Creative Commons**

## Port of Shawnee River Recreation Area mapXchange

VFW-Post-6654\_AIMS-jocogov-map



Google Maps **Terrain Tab** reduces Elevation Awareness Deficiency (2006)  
KVHA-OCTA Mapping Emigrant Trails (MET) PNTS Workshop (2007)

[Kansas SB 518](#): De Soto-Johnson County Riverfront Authority (2008)  
Empowering KDWP-Tourism ***Port of Shawnee River Recreation Area***

Supporting Freedom's Frontier NHA Comprehensive Master Plan (2009)  
**HOAC-BSA / VFW Post 6654 Centennial Eagle Scout Project** (2010)

“[Golden Case](#)” **Ruling** :: **Social Responsibility thinkLets**

Frontier Military Historic Byway (**FMHB**) **AGR-iTourism(cc)**

**Glacial Hills BioGeography Bibliography:**

**ISBN-10 0-9627079-0-2** (Paperback 0-9627079-1-0): On the Trail of the Ice Age (1990) by Henry S. Reuss [IAPTF Maps: pp. 95-117]

**ISBN-10 0-87020-317-7:** History Just Ahead – A Guide to Wisconsin’s Historical Markers Edited by Sarah Davis McBride (1999)  
State Historical Society of Wisconsin; 816 State Street; Madison, Wisconsin 53706-1488

**ISBN-13 978-145381128-3:** A Trail for All Seasons (Fourth Ed. Nov 10, 2010)  
by Clay Shannon [PDF: <http://www.lulu.com/blackbirdcraven>] Digital versions also available from Amazon.com CreateSpace



## High-TEK Power of Place RO/CS

### Wisconsin Historical Marker #305:

**Fleet Admiral William D. Leahy (Erected 1991)**

Bay View/Lake Park, Hwy. 2, east of jct. with Hwy. 13 Ashland  
(OSX/OpenCaching: N46.61242 W90.83711)

**Carl Schurtz (1829-1906): The true patriot ...**

*"Our country, right or wrong.*

*When right, to be kept right; when wrong, to be put right."*



Expand to preview BioGeography Table of Contents (BGTOC)

